

* Boundary lines are for illustrative purposes only *



18 Heath Road LEPPINGTON NSW

2 

Inspection :
Saturday 28th September 11:30AM- 12:00PM

Price : Auction Price Guide \$2,800,000
Land Size : 2003 sqm
View : <https://www.romicmoore.com.au/8126099>

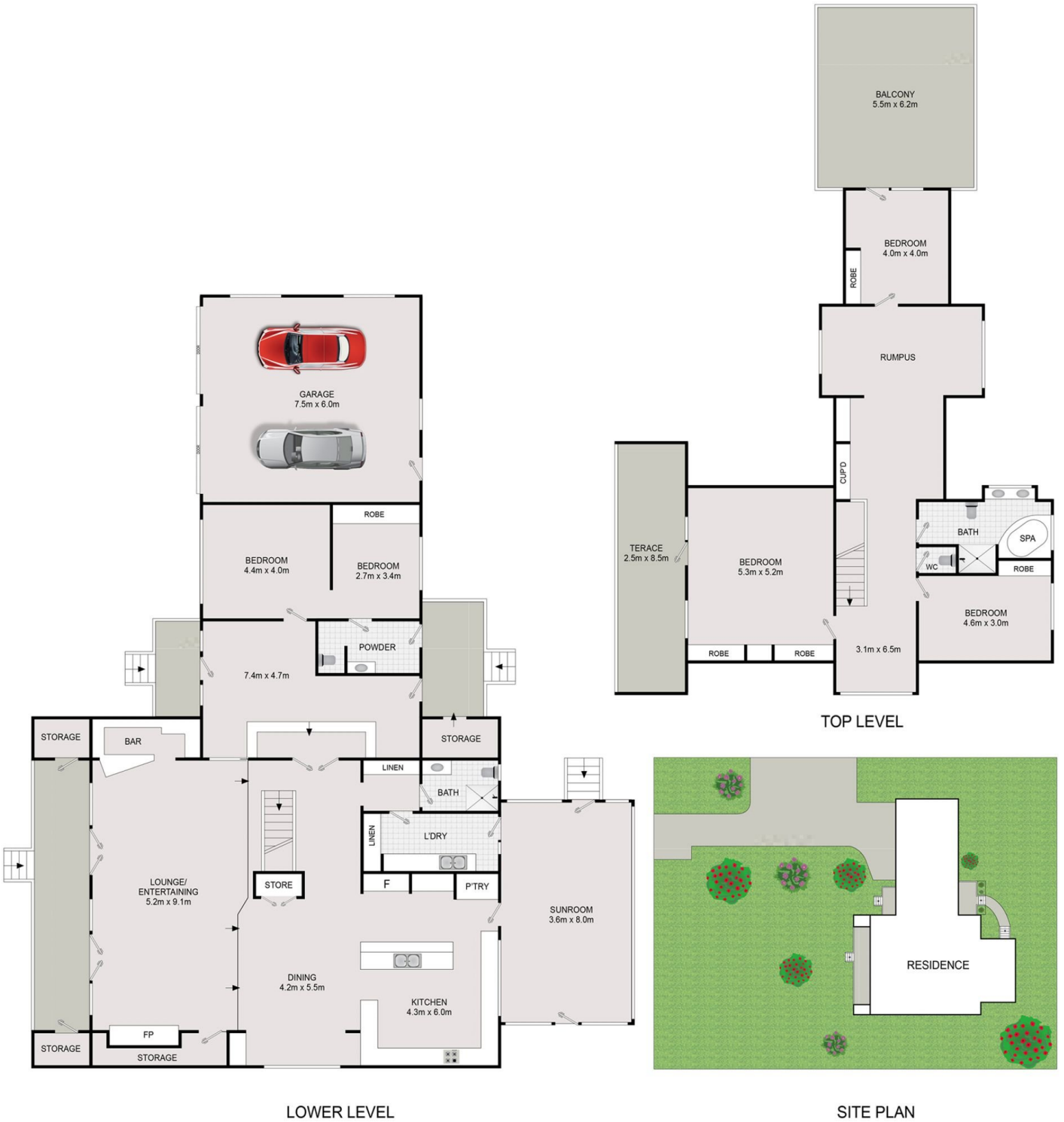
RomicMoore Property is proud to present 18 Heath Road, Leppington to the market.

This exceptional property and potential development site spans approximately 2,003 sqm and is zoned R3 Medium Density Residential, providing a multitude of potential uses.

One of the standout attributes of this property is its dual street frontage, with an impressive 39 metres* to Heath Road at the front and a 39 metre* frontage facing Batavia Avenue to the rear, offering exceptional access and

Slavko Romic
0293621700

Anthony Moore
0293621700



DISCLAIMER: Drawings are approximate and to be used for visual representation ONLY. All enquiries must be directed to the vendor, agent or party representing this floor plan.

